

Bovine Mastitis

Products for Microbiological Analysis



 Online Ordering Available

100316TR



Hardy Diagnostics has everything for your laboratory!

SAVE MONEY

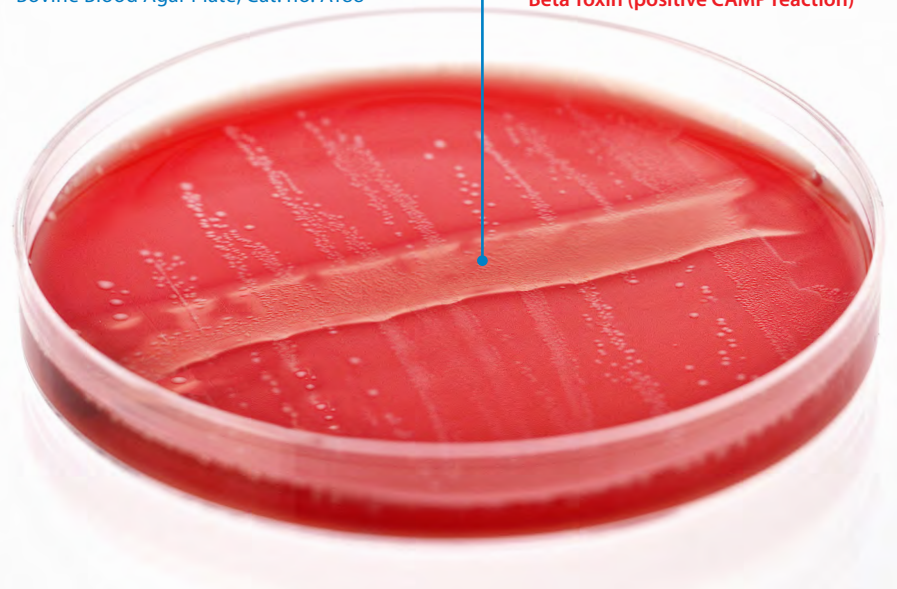
Now you have a choice for obtaining your supplies for mastitis testing. Hardy Diagnostics manufactures a complete line of culture media and supplemental products specifically for bovine mastitis.

Mastitis Microbiology Made Easy!

Our products are designed to aid in the rapid identification of bovine mastitis organisms and to enhance your mastitis control program.

- Speed**
Obtain reliable results in 24 hours for *Staphylococcus* and *Streptococcus*. Mycoplasma cultures can be detected in as little as three days.
- Performance**
All our mastitis media formulas are engineered for superior performance and consistency.
- Availability**
Hardy manufactures and sells directly to you. You can stock your entire laboratory with one purchase order. Choose from thousands of microbiology products. www.HardyDiagnostics.com
- Quality**
Hardy Diagnostics is known for manufacturing quality media for microbiologists since 1980.

Bovine Blood Agar Plate, Cat. no. A188



Enhanced hemolysis with addition of Beta Toxin (positive CAMP reaction)

- Our Bovine Blood Agar uses bovine blood cells that are triple washed for improved sensitivity.
- Bovine Blood Agar is used for the detection of *Streptococcus agalactiae* and *Staphylococcus aureus*.
- The addition of Beta Toxin on Bovine Blood Agar aids in the identification of *Streptococcus agalactiae* by using a modified CAMP test.
- *Staphylococcus aureus* can be confirmed within one minute by using the StaphTex™ Blue Kit.

Bovine Blood Agar Plate

A general purpose media for the isolation and differentiation of mastitis-causing bacteria. Used to presumptively identify *Staphylococcus* and *Streptococcus* species based on colony morphology and patterns of hemolysis.

15x100mm plate, 10/pkA188

Bovine Blood Agar Plate with Esculin

Contains esculin (full strength) to differentiate group D streptococci from *Streptococcus agalactiae*, as *S. agalactiae* is not capable of esculin hydrolysis. When esculin is hydrolyzed by organisms it forms dextrose and esculetin, which react with a compound in the media to produce a darkening or blackness around the colonies.

15x100mm plate, 10/pkA189



Bovine Blood Agar with Esculin, Modified (Washed Cow Blood Agar)

Bovine Blood Agar with Esculin, Modified is similar to Bovine Blood Agar with Esculin, except with half-strength esculin. Also known as Washed Cow Blood Agar.

15x100mm plate, 10/pkA186

Mycoplasma Agar & Broth

Hardy Diagnostics Mycoplasma Agar is formulated with the necessary nutrients and selective antibiotics for the reliable isolation of *Mycoplasma*. The broth is for enrichment of the specimen before plating.

Agar Plate

15x100mm plate, 10/pk.....G102

Broth Tube

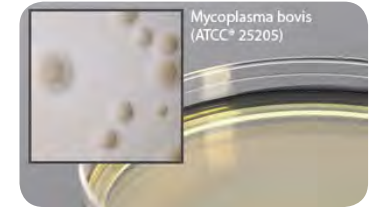
13x100mm tube, 4ml fill, 20/pk.....R102



Mycoplasma Agar w/Cefoperazone

For the detection of Mycoplasma spp. associated with bovine mastitis.

18ml fill, 15x100mm plate, 10/pkG212



Bovine Selective Strep Agar

For the selective isolation of *Streptococcus* species from bovine mastitis specimens. Also known as TKT Agar, CAMP Agar, or Modified Edwards Agar.

15x100mm plate, 10/pk.....A143

Bovine Selective Staph Agar

For the selective isolation of *Staphylococcus* species from bovine mastitis specimens. 15x100mm plate, 10/pk.....A157

Mastitis Biplate

Bovine Blood Agar with Esculin / MacConkey Agar
15x100mm biplate, 10/pk.....J129

Mastitis Triplate

Bovine Selective Strep / MacConkey Agar / BloodAgar
15x100mm triplate, 10/pk.....J312

Beta Toxin, for CAMP test, 25ml, each.....Z306

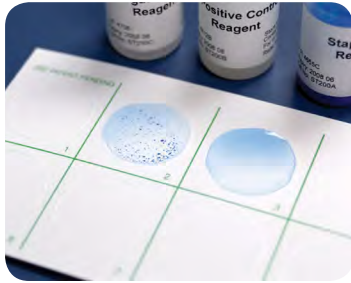
Cotton Swab, sterile, wood shaft, individually wrapped
100/box.....HD258061WC

Tryptic Soy Agar with 5% Blood and .1% Esculin

Recommended for use in the screening of dairy products. This product is not intended to be used for the diagnosis of human disease.
15x100mm plate, 10/pkA19BX



Beta Toxin



StaphTex™ Blue Kit

A rapid latex agglutination kit which tests for both the Clumping Factor and Protein A found in *Staphylococcus aureus*. The entire procedure to identify *Staphylococcus aureus* takes less than one minute!

50 tests.....ST50
 200 tests.....ST200
 1000 tests..... ST1000



StrepPRO™ Streptococcal Grouping Kit,

Rapid latex agglutination test for *Streptococcus* Lancefield grouping, includes A, B, C, D, F, G latex, controls, extraction reagents, cards, and mixing sticks.

60 tests.....PL030HD



California Mastitis Kit

For the rapid cowside detection of subclinical mastitis. A simple, accurate, and inexpensive method of determining mastitis problems and for overall herd monitoring. Immediately detects elevated somatic cell counts in bulk tank milk or within individual quarters. Includes complete instructions and record charts in English and Spanish.

Approx. 350 tests..... CMTKIT



InPouch TF-Bovine

Trichostrongylus axei in cattle is a sexually transmitted infection and is associated with aborted calves, low birth weight, or delayed calving, which can result in decreased herd yields of 8-29%. Bull infection rates are 6-8%, but have been found to be as high as 44% in some rangeland areas of the Western US. Bovine Trichomoniasis is caused by the flagellated protozoan, *Trichomonas foetus*.

InPouch™ is used for the detection of non-specific trichomonads in bovines, *Trichomonas gallinae* in avian, and *T. suis* in swine.

- Requires less hands-on time than wetmount.
- Two procedures are combined into one test (culture and microscopic identification). Pouch with media format.

10 test.....111010
 100 test.....111003



Pasteurization Kit

Alkaline phosphatase is an enzyme naturally produced by mammary cells and present in cow's milk. Alkaline phosphatase is inactivated at a higher temperature than is required to kill non-spore-forming bacterial pathogens. Decreased activity of alkaline phosphatase can be used to determine that milk was pasteurized properly and that the pasteurized milk is not contaminated with raw milk. Alkaline phosphatase is detected by its ability to cleave phenolphthalein monophosphate, releasing phenolphthalein. Hardy Diagnostics Alkaline Phosphatase Kit is based on the Rutgers method, which is a stable and sensitive method that provides an easy to interpret color read out within 30 minutes.

125 tests.....Z132





A Culture of Service™

1430 West McCoy Lane

Santa Maria, CA 93455

www.HardyDiagnostics.com | Sales@HardyDiagnostics.com

Distribution Centers: California | Washington | Utah | Arizona

Ohio | Texas | New York | Florida | North Carolina