

HARDY DIAGNOSTICS
EXCLUSIVE

Strep B

Carrot Broth™

One-Step



Simple
detection of GBS
in one step!

 **HARDY**
DIAGNOSTICS
A Culture of Service™


Every life deserves an opportunity to **grow** and **thrive**.

Better tests enable you to provide **just that**.



**Better testing.
Better processes.
Better outcomes.**

Our exclusive Carrot Broth™ One-Step system allows for **faster results** for the **cultivation** and **identification** of beta-hemolytic strains of Group B Streptococcus in pregnant women.

A hand in a blue nitrile glove is shown from the top right, holding a white pipette tip. Another hand in a blue nitrile glove is shown from the bottom left, holding a small, clear plastic vial. The vial has a white label with black text that includes "Strep B CARROT", "REF Z40 LC", and "Patent No. 8,103,828". The vial contains a small amount of yellowish liquid. The background is plain white.

Compared to conventional methods, it's not even close

When compared to methods such as PCR or LIM broth, Carrot Broth significantly reduces the work load, the cost, and time necessary to accurately identify GBS colonization in pregnant women.

Strep B Carrot Broth™ One-Step™ features greater sensitivity and decreased turn-around-time, which lowers overall costs.

A clear, chromogenic reaction as early as 16 hours after testing tells you everything you need to know: **Positive**.

Positive results do not require additional work ups.

The advantages are clear.

- Easy one-step process! Place the patient specimen directly into the media.
- Development of any orange to red color indicates a positive result.
- For positives, there is no need for further subculturing to confirm.
- Significantly lower costs when compared to PCR methods.
- **Increased accuracy when compared with LIM Broth. Clinical testing demonstrated a sensitivity of 98.8% and a specificity of 98.2% for the recovery of GBS from patient specimens when compared to LIM Broth.***
- **Strep B Carrot Broth™ One-Step** was found to be more sensitive than PCR!**
- Negative cultures from **Strep B Carrot Broth™ One-Step** should be subcultured to **GBS Detect™** (Cat. no. A300) to detect weakly or non-hemolytic strains of GBS.





- **Strep B Carrot Broth™ One-Step** is available in multiple formats that work on many automated inoculating platforms.
- In house studies showed a sensitivity of 99% at 10^2 CFU/ml, and specificity of 100%. Data available upon request.
- *Ledeboer, N. et al. **“Evaluation of New Strep B Carrot Broth™ One-Step in the Detection of Group B Streptococcus: A Multi-Center Study”** poster at ASM 2017, New Orleans, LA. During the study, there were 9 beta hemolytic GBS recovered by color reaction in Carrot Broth that were not recovered by LIM broth. There were also 4 non-hemolytic GBS recovered upon subculture of Carrot Broth to blood agar that were not recovered by LIM broth.
- **Schreckenberger, P. **“Comparison of Real-time PCR with standard LIM Broth and Carrot Broth for the Detection of Group B Strep”** poster at ASM 2006, Orlando, FL.

To further explore the research listed above, please visit:
hardydiagnostics.com/carrot-broth/



US Patent No. 8,313,938 B1 and
US Patent No. 8,518,688 B1

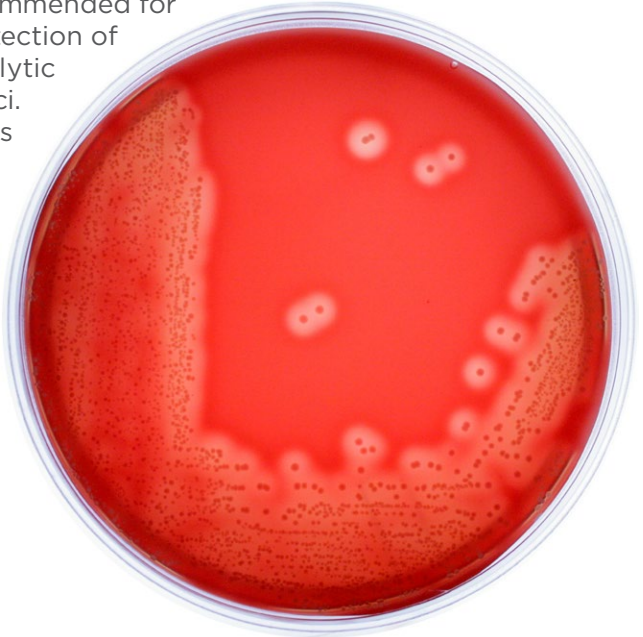
GBS Detect™

for Weakly or Non-Hemolytic Strains

A perfect companion product to Carrot Broth™ which does not detect non-hemolytic strains.

GBS Detect™ is recommended for the isolation and detection of weakly or non-hemolytic Group B Streptococci.

GBS Detect™ induces beta-hemolysis of weakly or non-hemolytic GBS upon subculture from enrichment broth procedures, such as LIM Broth or Strep B Carrot Broth™ One-Step.



Strep B Carrot Broth™ One-Step 13x100mm glass tube,20/pk.....Z40

Strep B Carrot Broth™ One-Step 12x80mm plastic tube,100/pk..... Z44BX

Strep B Carrot Broth™ One-Step 16x100mm glass tube,100/pk Z46BX

GBS Detect™ 15x100mm plate, 10/pkA300

GBS Detect™ 15x100mm plate, 100/bxA300BX

GBS Detect™ 15x100mm plate with reduced stacking ring for automated inoculating devices, 10/pk.....GA300

StrepPRO™ Streptococcal Grouping Kit

A latex agglutination test for the rapid identification of beta-hemolytic streps includes groups A, B, C, D, F, and G. 60 testsPL030HD

Control Organisms

Streptococcus agalactiae derived from ATCC® 12386™

KWIK-STIK™ 6/pk.....0439K

Streptococcus pyogenes, Group A derived from ATCC® 19615™

KWIK-STIK™ 6/pk.....0385K

Strep B Carrot Broth™ One-Step method

Day 1: Initial inoculation

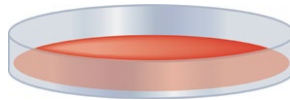
Strep B
Carrot Broth™
One-Step



Day 2: 16-24 hours after read for color change

No color change
(approx. 75%).
Subculture to
GBS Detect™
(Cat. no. A300)

Orange
to red
color
change



**Report
Positive**
approx. 25%

No further testing required.

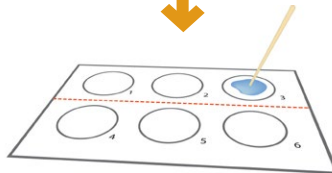
Day 3: 18-24 hours after subculturing, read for suspect colonies that resemble GBS

No suspect
colonies

Suspect beta-hemolytic
colonies

Perform Latex
Agglutination test
(Cat. no. PLO30HD)

**Report
Negative**



Report Negative

Report Positive
approx. 4%



HARDY
DIAGNOSTICS

A Culture of Service™



100%
Employee Owned

ESTABLISHED

1980



Made in the USA



FM 572526

Hardy Diagnostics has a Quality Management System that is certified to ISO 13485 and is a FDA licensed medical device manufacturer.

Headquarters

1430 West McCoy Lane
Santa Maria, CA 93455
800.266.2222
Sales@HardyDiagnostics.com
HardyDiagnostics.com

Distribution Centers

Santa Maria, California
Olympia, Washington
Salt Lake City, Utah
Phoenix, Arizona
Dallas, Texas
Springboro, Ohio
Lake City, Florida
Albany, New York
Raleigh, North Carolina

Copyright © 2019 Hardy Diagnostics

strep B
one-step™
carrot broth