

# Dilucup™ Elegance

Semi-automated Serial Dilution System

 **HARDY**  
DIAGNOSTICS  
A Culture of Service™

**Dilushaker III**  
digital

 Online Ordering Available

# DILUCUP™ ELEGANCE



## Headquarters

1430 West McCoy Lane  
Santa Maria, CA 93455  
800.266.2222 : phone  
Sales@HardyDiagnostics.com  
www.HardyDiagnostics.com



## Distribution Centers

Santa Maria, California  
Olympia, Washington  
Salt Lake City, Utah  
Phoenix, Arizona  
Dallas, Texas

Springboro, Ohio  
Lake City, Florida  
Albany, New York  
Raleigh, North Carolina



The Quality Management System at the Hardy Diagnostics manufacturing facility is certified to ISO 13485.

Copyright © 2017 Hardy Diagnostics

ISO 13485  
FM 572526

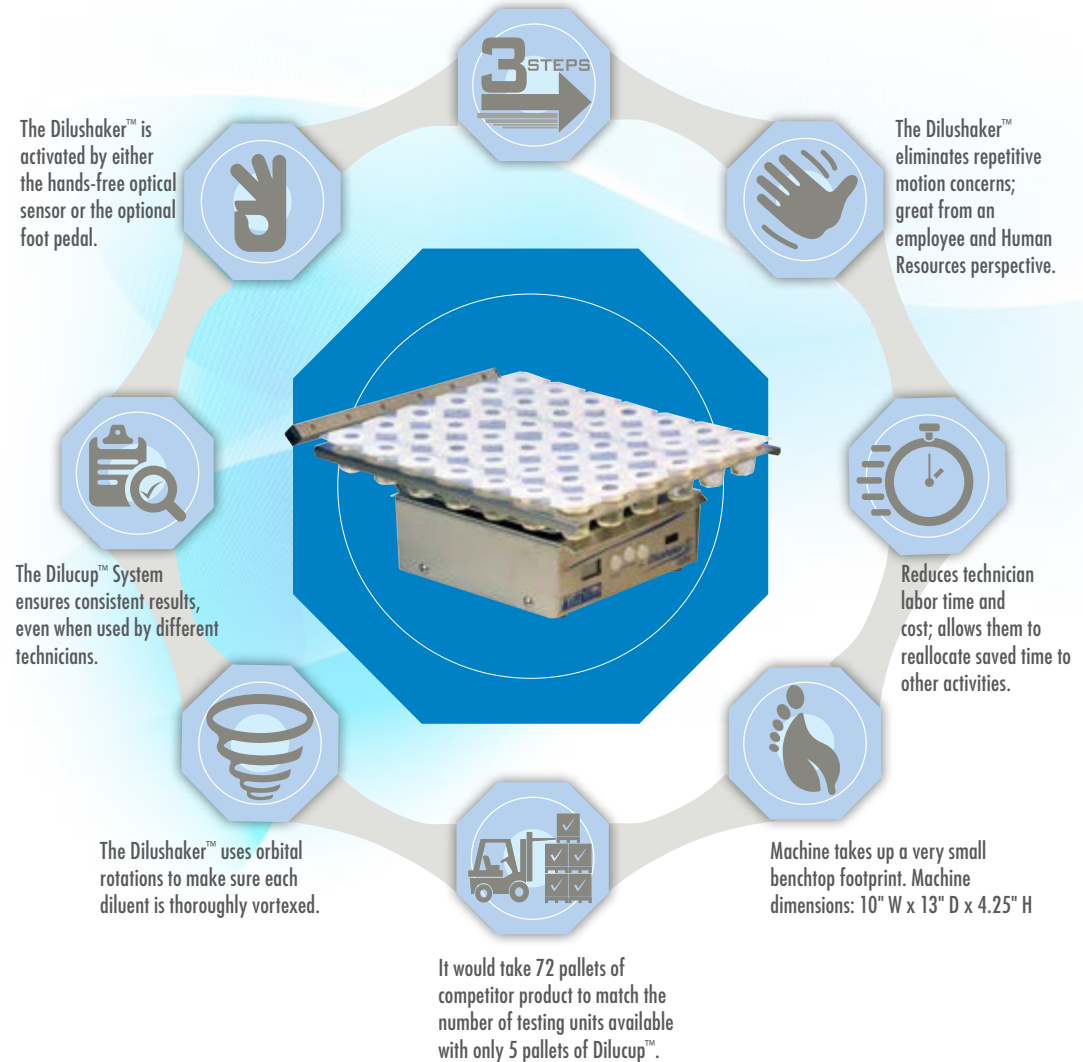
## Content

- 1 Dilucup™ System
- 2 Dilucup™
- 4 Dilushaker III™
- 6 Accessories
- 8 Compact Dry



# Dilucup™ System

When comparing the number of touches required, competitor vials require 7 touches vs. 3 touches for Dilucup™.



1% of all earnings are donated to charitable causes.

# Dilucup™

## Serial Dilution System

Dilucup™ saves time and money spent on preparing your own dilution vials!

### Easy as 1, 2, 3!

- 1** Simply add 1mL sample to the first Dilucup™.
- 2** Start the shaker by waving your hand in front of the motion sensor. When the Dilushaker™ stops, the next dilution is ready.
- 3** With a new pipet tip, collect 1mL from the first cup and release it into the second cup and start the shaker again. Continue this until the final dilution is reached.

#### Dilucup Elegance MRD (Maximum Recovery Diluent)

- 40DEMRD3 Max Recovery Diluent, dilution blank, 9ml fill, ready-to-use cups, 672 (2 x 16 x 21) total cups with 3 cups/row, by LabRobot
- 40DEMRD6 Max Recovery Diluent, dilution blank, 9ml fill, ready-to-use cups, 672 (2 x 8 x 42) total cups with 6 cups/row, by LabRobot

#### Dilucup Elegance BPW (Buffered Peptone Water)

- 40DEBPW3 Buffered Peptone Water, dilution blank, 9ml fill, ready-to-use cups, 672 (2 x 16 x 21) total cups with 3 cups/row, by LabRobot
- 40DEBPW6 Dilucup™, Buffered Peptone Water, dilution blank, 9ml fill, ready-to-use cups, 672 (2 x 8 x 42) total cups with 6 cups/row, by LabRobot

#### Dilucup Elegance NaCl, 0.85%

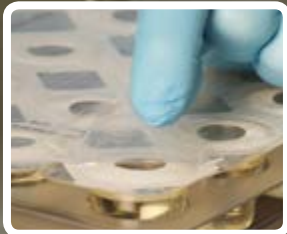
- 40DENACL3 NaCl with buffer, dilution blank, 9ml fill, ready-to-use cups, 672 (2 x 16 x 21) total cups with 3 cups/row, by LabRobot
- 40DENACL6 NaCl with buffer, dilution blank, 9ml fill, ready-to-use cups, 672 (2 x 8 x 42) total cups with 6 cups/row, by LabRobot

*Butterfield's Phosphate Buffer coming soon!*

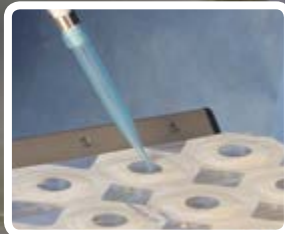
**Sterilized by irradiation**



**Easy peel-off film**



**Time saving, sterile, pre-filled diluent**



**Long shelf life**



**Buffers for every industry**



**Compact for efficient storage**



# Dilushaker™ III

Digital

Precision and speed in the lab at your fingertips!  
The Dilushaker™ III is an orbital shaker that vortexes each diluent the same way, every time, with no spill over!

LED indicator lets you know what dilution you are in

Removable tray for easy cleaning

Cat. no. 40DS42PRXT



3 row, 21 cup Dilushaker™ III, Cat. no. 40DS21PRXT

### Accessories

- 40ET42XT Removable tray for Dilucup, 42 cups (Does not include adaptor 40BX01)
- 40FS02 Footswitch
- 40PS12 Power Supply 12v for Dilushaker™ III
- 40TC1567 Transport suitcase for 2 Dilushakers (with 2 wheels and trolley handle)
- 40BX01 Adaptor for removable tray (buyer must specify model)

### Dilushaker

- 40DS42PRXT 6 rows w/LED indicators, includes extractible tray for 42 cups (7 x 6)  
Machine dimension: 10" W x 13" D x 4.25" H
- 40DS21PRXT 3 rows w/LED indicators, includes extractible tray for 21 cups (3 x 6)  
Machine dimension: 7.25" W x 13" D x 4.25" H



Easy Hands-free activation or foot switch activation



The Dilushaker™ III is an orbital shaker that vortexes each diluent the same way, every time

- Motion Sensor
- Adjustable vortex time, from 1 to 15 seconds per dilution step
- Adjustable number of dilution steps per sample
- Adjustable rotation speed (400, 500, or 600 rpm)
- LCD for choosing functions above

# Accessories

## Portable Pipet Controller - Reduces repetitive work injuries!

The Diamond SeroLogic™ portable pipet controller is a rechargeable electronic pipetting aid designed for use with glass or plastic serological pipets in the 0.1 to 100ml volume range. It is lightweight and ergonomically designed for effortless pipetting even during extensive use.

- One year warranty
- Low battery indicator
- Ergonomic design with soft grip push buttons
- Conveniently located speed control switch for one-handed operation
- Powerful 3-speed engine
- Safety valve and replaceable membrane filter provide double protection against fluid and aerosol contamination
- The supplied charger is protected against over-charging, overheating, and short circuiting
- Removable nose cone is autoclavable
- Up to eight hours of continuous use on a single charge



Portable, rechargeable, each **3380**

Package Includes:

- Two 1000mAh NiMH rechargeable batteries
- Battery charger
- Three PTFE membrane filters: (1) 0.20µm, (2) 0.45µm (one installed)
- Desktop stand
- Wall mounting bracket

**DiamondSeroLogic™**



### Sterile, 25 per pack

1ml Pipet, 1000/case **1710**

### Non-Sterile, 25 per pack

1ml Pipet, 1000/case **1715**

## Serological Pipets

- Calibration is certified for accuracy
- Ergonomic design for use in tight spaces
- Reverse graduations
- Includes aerosol barrier filter plug
- Fits all major brands of pipettors
- Calibrated to deliver (TD); meets ASTM E934



# Pipettor

## Discovery Pipet

These precision pipets are designed for exceptional comfort and accuracy. They fit comfortably in either the right or left hand with the large digital display visible to the user. Chemically resistant, maintenance-free seals and finely polished pistons provide accuracy sample after sample. Volume can also be adjusted by turning the push-button. Ergonomic tip ejector reduces fatigue during prolonged use.

Adjustable, with tip eject, 0.5-10ul

**P394010**



## Pipet Tips

Tips by Globe Scientific fit all of the commonly used pipettors; such as Centaur®, Pipetman®, Eppendorf®, MLA®, Ames®, Gilson®, Oxford®, Oxford® Slimline®, and Clay Adams Selectapette. Made from prime virgin polypropylene, tips provide high accuracy and reproducibility for effective laboratory testing. The tips are available in bulk or autoclavable racks.



### Pipet Tip, 1000 per case

Natural, 1-2000ul, **151140R**  
5x200/rack

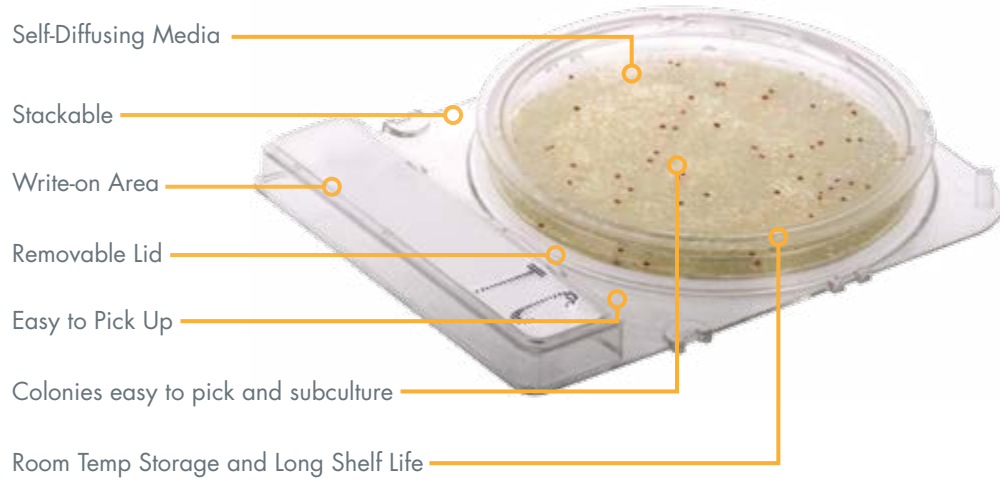
### Pipet Tip, 1000 per bag

Natural, bulk, 1-2000ul, **151140**  
5x200/bag





Compact Dry™ is a ready-to-use system reducing the time needed to perform microbial testing on food, beverage, meat, cosmetics, and raw materials. Place 1ml of sample onto the plate and incubate. Colonies grow and develop specific colors from chromogenic substrates. This provides for easy organism differentiation and counting.



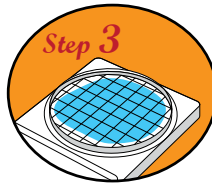
**Procedure:**



Remove protective cap from Compact Dry™ plate.



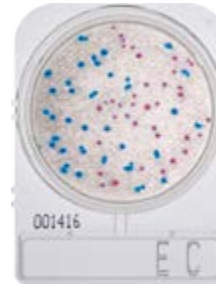
Drop 1ml of specimen (dilute if necessary) in the middle of dry sheet.



Specimen diffuses automatically into the plate, transforming the dry medium to gel.



Attach the cap, and incubate for prescribed time. Count the number of colonies on a light box (Cat. no. 378642000).



**Compact Dry™ EC**  
*(E. coli and Coliforms)*  
Compact Dry™ EC contains two kinds of chromogenic enzyme substrates: Magenta-Gal and X-Gluc. *E. coli* forms blue colonies, Coliforms turn red. The total coliform group count is the sum of both the red and blue colonies.  
100/pk..... EC100



**Compact Dry™ TC**  
*(Total Count)*  
Compact Dry™ TC for total viable bacterial count. Growing colonies appear red due to redox indicator tetrazolium salt.  
100/pk ..... TPC100



**Compact Dry™ YM**  
*(Yeast and Mold)*  
Compact Dry™ YM, yeasts and mold can be differentiated by color. Molds form colonies with a blueish color.  
100/pk..... YM100



**Compact Dry™ SL**  
*(Salmonella)*  
For the presumptive identification and enumeration of *Salmonella* spp.  
100/pk..... SL100



**Compact Dry™ LS**  
*(Listeria)*  
For the selective growth, presumptive identification, and enumeration of *Listeria* spp.  
100/pk..... LS100



**Compact Dry™ XSA**  
*(Staphylococcus aureus)*  
For the selective growth and differentiation of *Staphylococcus aureus*. *Staphylococcus aureus* growth results in blue/blue green colonies.  
100/pk..... XSA100



*A Culture of Service™*

1430 West McCoy Lane

Santa Maria, CA 93455

[www.HardyDiagnostics.com](http://www.HardyDiagnostics.com) | [Sales@HardyDiagnostics.com](mailto:Sales@HardyDiagnostics.com)

Distribution Centers: California | Washington | Utah | Arizona

Ohio | Texas | New York | Florida | North Carolina