

Hardy**CHROM**™ SS NoPRO



**Prospective Evaluation of HardyCHROM™ SS NoPRO
Agar for *Salmonella* and *Shigella* Isolation from
Routine Stool Culture**

Prospective Evaluation of HardyCHROM™ SS NoPRO Agar for *Salmonella* and *Shigella* Isolation from Routine Stool Culture

Author Block: L. Tea, M. Umali-Wilcox, S. Butler-Wu; LAC+USC Med. Ctr., Los Angeles, CA

Abstract:

Background: Traditional stool culture media (e.g. Hektoen enteric agar) have high rates of isolation of non-pathogenic microbiota that can mimic the colony morphologies of *Salmonella* and *Shigella* species. Consequently, traditional stool cultures are associated with significant culture work-up and thus higher demands on technologists' time. HardyCHROM™ SS NoPRO is inhibitory to *Proteus* species and would be anticipated to reduce the number of unnecessary work-ups from stool cultures.

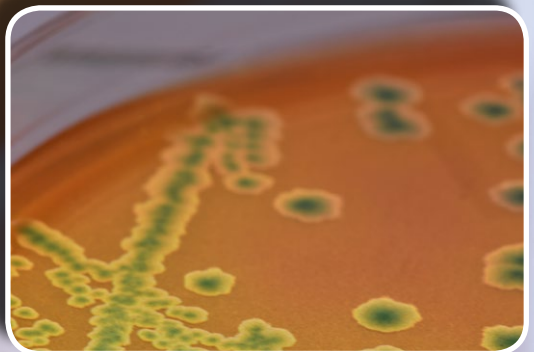
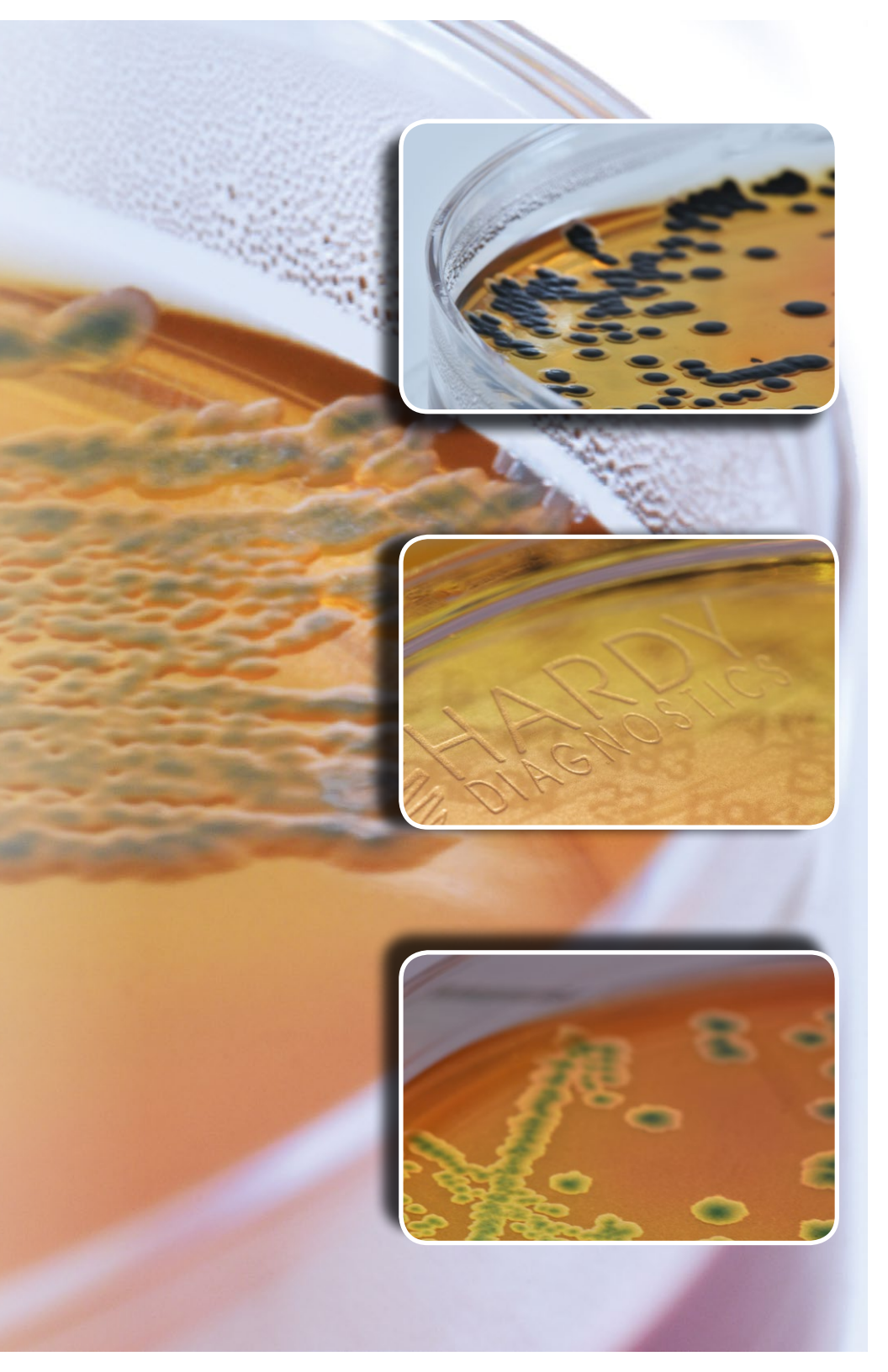
Methods: From June-August 2017, all stools received for clinical stool culture testing were inoculated in parallel on HardyCHROM™ SS NoPRO agar. Results of standard of care and HardyCHROM™ SS NoPRO agar testing were directly compared. The number of cultures negative for *Salmonella* and *Shigella* but requiring further work-up was assessed and a cost analysis was performed.

Results: A total of 175 stool cultures were performed during the study period. Nine specimens were positive for *Salmonella* and *Shigella* species by standard of care culture (5.1% positivity rate): *Shigella flexneri* =6, *Shigella sonnei* =1 and *Salmonella* species =2. 76 specimens required additional work-up with the standard of care culture, compared with 28 specimens for HardyCHROM™ SS NoPRO (specificity of 54% and 83%, respectively). In total, 90 colonies from SS agar required further work up (cost = \$848) compared with 30 colonies from HardyCHROM™ SS NoPRO (cost = \$157) during the study period.

Conclusions: Compared with SS Agar, HardyCHROM™ SS NoPRO would have reduced the number of cultures requiring work-up by 50% and reduced the overall costs associated with stool culture by 80% when colonies were directly identified by MALDI-TOF.

Acknowledgments/ References:

HardyCHROM™ SS NoPRO agar for this study was kindly provided by Hardy Diagnostics. We thank the LAC+USC Clinical Microbiology laboratory staff for technical assistance.





ESTABLISHED
1980



Made in the USA

Headquarters

1430 West McCoy Lane
Santa Maria, CA 93455
800.266.2222 : phone
Sales@HardyDiagnostics.com
HardyDiagnostics.com

Distribution Centers

Santa Maria, California
Olympia, Washington
Salt Lake City, Utah
Phoenix, Arizona
Dallas, Texas
Springboro, Ohio
Lake City, Florida
Albany, New York
Raleigh, North Carolina

Copyright © 2018 Hardy Diagnostics