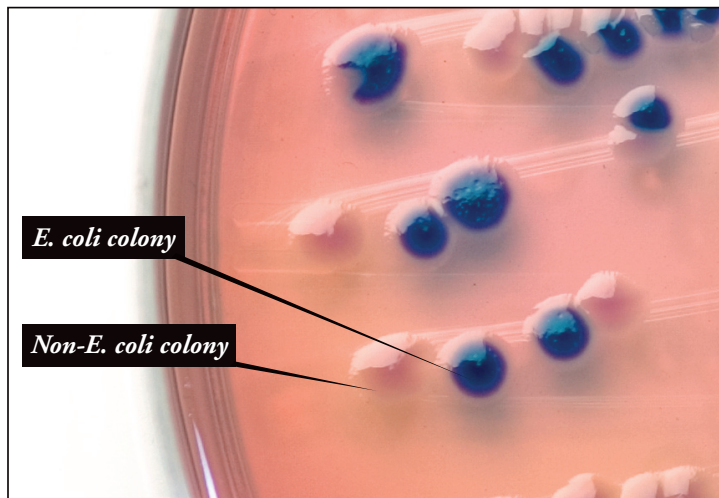


Roses are red, E. coli turns **blue**...



BluEcoli™ Urine Biplate with mixed culture (Chromogenic side shown)

Introducing the new BluEcoli™ Urine Biplate from Hardy Diagnostics.

A revolutionary new agar plate for economically screening urine specimens for *E. coli*.

Inoculate both sides of this biplate with the urine specimen. If the infecting organism is *E. coli*, the colonies on the chromogenic side of the biplate will turn blue.³ Since 80-90% of all positive urine cultures are *E. coli*, the BluEcoli™ Urine Biplate is a fast, easy, and cost effective way of identifying *E. coli*. The blue color is confirmatory! No further confirmation or indole testing is required.¹

Save time and money by not using an expensive identification system. With the BluEcoli™ Urine Biplate you can select a colony off the blood agar side of the biplate for the susceptibility testing.

¹ The performance of a spot indole test alone is not an adequate screen for *E. coli*, since there are at least 52 species of gram-negative bacilli that grow on MacConkey, are indole-positive and ferment lactose.

² Kodaka et al., *Journal of Clinical Microbiology*, Jan. 1995, p.199-201

³ Colonies of the serotype *E. coli* O157 which are not usually associated with urinary tract infections are an exception, and will not turn blue on the chromogenic side of the BluEcoli™ Urine Biplate.

Features and Benefits

Readability

E. coli colonies turn a distinct blue color within 16 to 24 hours.³ As an added benefit, mixed cultures are very easy to spot on the chromogenic side.

Confirmatory

No further testing required. A blue color change is confirmatory for *E. coli*. Found to be 98.5% sensitive and 100% specific for urine specimens.²

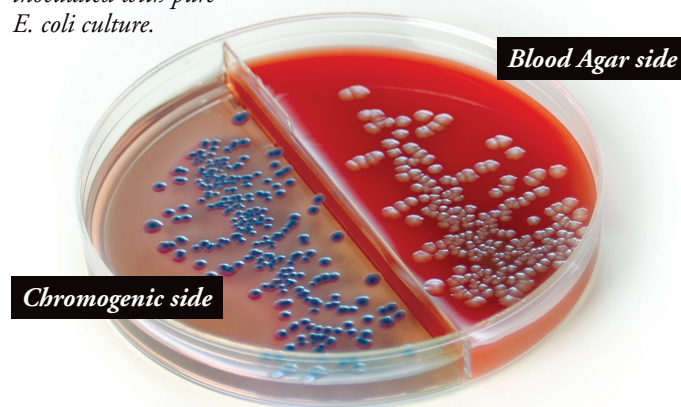
Cost Effective

Because the BluEcoli™ Urine Biplate is confirmatory, there is no need for additional expensive identification cards or panels.

Logical

Since 80 to 90% of positive urine specimens are *E. coli*, this plate is **cost effective** and **saves valuable time**.

BluEcoli™ Urine Biplate
inoculated with pure
E. coli culture.



Chromogenic side

Blood Agar side

BluEcoli™ Urine Biplates

Blood Agar/BluEcoli™ Cat. no. J123
CNA/BluEcoli™ Cat. no. J116

Call us today to order your FREE evaluation kit!



Phone: 800.266.2222

Website: www.hardydiagnostics.com

Email: sales@hardydiagnostics.com

Santa Maria, CA Salt Lake City, UT Phoenix, AZ Tacoma, WA Lima, OH